



RESEARCH ARTICLE

EVALUATION OF ALLELOPATHIC EFFECT OF AQUEOUS LEAF EXTRACT OF *TECOMASTANS* (L.) ON SEED GERMINATION AND BIOCHEMICAL CHANGES IN *VIGNARADIATA* (L.)

^{1,*}Mansoor Ahmad Bhat and ²Yogamoorthi, A.

¹PG student, Department of Ecology and Environmental Sciences, Pondicherry University, Puducherry, India

²Associate professor, Department of Ecology and Environmental Sciences, Pondicherry University, Puducherry, India

ARTICLE INFO

Article History:

Received 19th February, 2017
Received in revised form
21st March, 2017
Accepted 24th April, 2017
Published online 31st May, 2017

Key words:

Allelopathy-*Tecomastans*-*Vignaradiata*-
Tolerance Index-Radical Length.

ABSTRACT

The effects of different concentrations (control, 10, 20, 40,80 and 100%) of aqueous leaf extract of fresh leaves of *Tecomastans* (L.) on radical length, shedding of seed coat, germination index, tolerance index, phytotoxic index and biochemical constituents of *Vignaradiata* (L.) were investigated. Aqueous leaf extract of *Tecomastans* (L.) affected negatively radical length and delayed shedding of seed coat in green gram. Significant reduction in the amount of total protein activity, amylase activity, invertase activity and protease activity were recorded in response to allelochemical stress. The highest activity of biochemical constituents of green gram was found in control while as lowest activity was found in 100% of extract concentration. The tolerance index was found to be decreased while as phytotoxic index was found to be increased from control to 100% in each day of experiment. The germination was found to be increased in each day of the experiment. The probable biochemical factor responsible for such allelopathy is discussed based on previous reports.

Copyright©2017, Mansoor Ahmad Bhat and Yogamoorthi. This is an open access article distributed under the Creative Commons Attribution License, which permits unrestricted use, distribution, and reproduction in any medium, provided the original work is properly cited.

Citation: Mansoor Ahmad Bhat and Yogamoorthi, 2017. "Evaluation of Allelopathic effect of aqueous leaf extract of *Tecomastans* (L.) on seed germination and biochemical changes in *Vignaradiata* (L.)", *International Journal of Current Research*, 9, (05), 51014-51021.

INTRODUCTION

Allelopathy is the chemical induction or inhibition of one species by another. The degradation of allelopathic crop may produce a variety of phytotoxins in the soil causing adverse effect in other plants (Nelson, 1996; Rice, 1984). Exact information about the allelochemicals, responsible for the allelopathic effects must be sought when assessing the effects of plants with enhanced allelopathic traits. The allelochemicals are produced in above or below ground plant parts or in both to cause allelopathic effects in a wide range of plant communities. Plant parts like roots, rhizomes, stems, leaves, flowers, inflorescence, pollen, fruits and seeds are known to contain allelochemicals (Rice, 1984). Plants produce a large variety of secondary metabolites like phenols, tannins, terpenoids, alkaloids, polyacetylenes, fatty acids, steroids, which have an allelopathic effect on the growth and development of the same plant or neighboring plants. These allelochemicals when released to the soil, inhibit germination, shoot and root growth of other plants and affect nutrients uptake or naturally occurring symbiotic relationship, thereby destroying the plant's usable source of nutrients (Abu-Romman *et al.*, 2010).

Apart from the direct toxic effect on other plants, some allelochemicals are supposed to influence the availability of nutrients in the soil. Generally, phenolic acids are considered to have important influence on nutrient cycling in terrestrial ecosystems because most of the allelopathic effects are reported to be due such phenolic monomers and phenolic acids. Leela *et al.* (2014) assessed the allelopathic influence of teak *Tectonagrandis* (L.) leaves on growth responses of green gram *Vignaradiata* (L.). Kavitha *et al.* (2012) evaluated allelopathic influence of *Vitexnegundo* (L.) on germination and growth of green gram *Vignaradiata* (L.). Fara *et al.* (2014) studied the allelopathic effect from *Chromolaenaodorata* (siam weed) leaves extract on germinating seeds of *Vignaradiata*. Ramakrishnan *et al.* (2014) investigated the effect of allelochemicals from leaf leachates of *Gmelinaarborea* on inhibition of some essential seed germination enzymes in green gram. Bimal *et al.* (2016) on allelopathic effect of invasive weed (*Solanum sisymbriifolium* lamk.) on germination and seedling growth of four widely cultivated indian crops including *Vignaradiata* (L.). Manimegalai *et al.* (2012) assessed the allelopathic influence of *Tectonagrandis* leaves on the germination of black gram and green gram. Hemanth *et al.* (2015) studied the allelopathic efficacy of aqueous extracts of *Zingiberofficinale* (Rosc.) on germination, vigor, growth and yield of *Vignaradiata* (L.). Gantayet *et al.* (2014) studied the allelopathic effect of *Lantana camara* on vegetative growth and yield components of green gram. In view of these

*Corresponding author: Mansoor Ahmad Bhat,

PG student, Department of Ecology and Environmental Sciences, Pondicherry University, Puducherry, India.

allelopathic characteristics possessed by several plants on seed germination present investigation was carried out to study the allelopathic effect of aqueous leaf extract of fresh leaves of *Tecomastans* (L.) on the early stages of seed germination and biochemical changes taking place in *Vignaradiata* (L.) (Green gram) seeds.

MATERIALS AND METHODOLOGY

MATERIALS

Collection of *Tecomastans* (L.) leaves

Matured fresh leaves were collected from garden land of Pondicherry University Experimental Farm and identified using the taxonomic keys. The plant leaves were cut into small pieces (Hamed *et al.*, 2014) and made ready for aqueous extract. The major chemicals present in *Tecomastans* (L.) are saponins, flavonoids, tannins, phenols, anthraquinones, alkaloids and glycosides. Fig 1(A) represents the general *Tecomastans* (L.) plant while as Fig 1(B) shows *Tecomastans* (L.) flower and leaves.



Fig 1 (A) *Tecomastans* (L.) plant



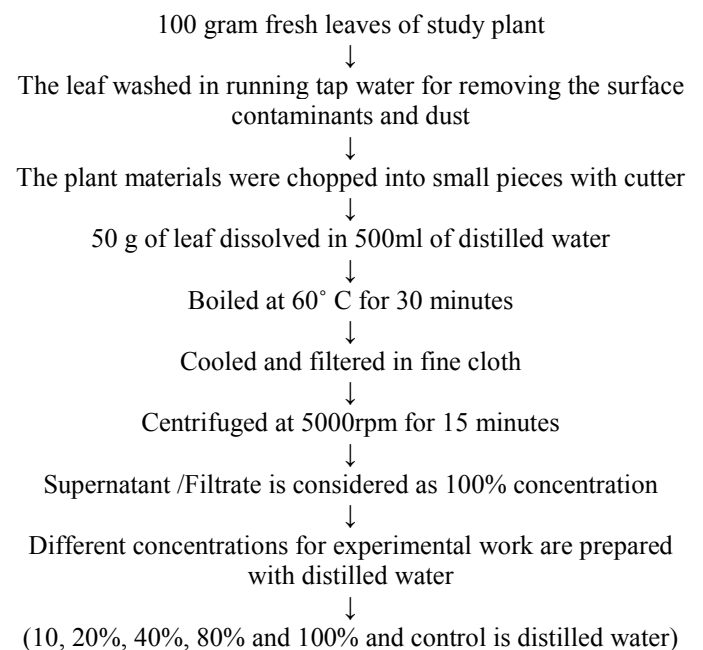
Fig 1(B) *Tecomastans* (L.) flower and leaves

Procurement of *Vignaradiata* (L.) (green gram) seeds

The mung bean *Vignaradiata* (L.) also known as the moong bean, green gram, or mung is a plant species in the legume family. Well matures and tested *Vignaradiata* (L.) seeds were purchased from the Puduva Agro Service, Govt of Puducherryan authorized dealer for farm inputs. The seeds were washed well and dried under sunlight for 2 hr. Then the seeds were soaked with Sodium hypochlorite solution in 5min. for sterilization of the seed surface (Maharajan *et al.*, 2007). The sterilized seeds after dry in room temperature are used for study.

METHODOLOGY

Aqueous extract of the fresh leaf preparation (Musyimi *et al.*, 2012)



Experimental set up

Triplicate discs for each concentration is set. Each disc is single lined with whatman1 filter paper to provide wetness to seeds throughout the experiment period (3days). 10 ml of extract (different concentration) added to each disc. 10 seeds were placed in each petri disc. Maintained at room temperature (in diffused light and dust free) for 3 days.

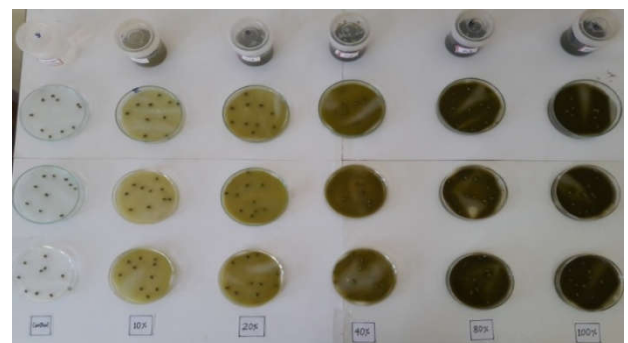


Fig. 2. Experimental setup

Measurement

Radical length was measured by using the graph sheet and one foot scale (Ramakrishnan *et al.*, 2014).

The total protein activity was measured by a modified method of Bradford (1976), amylase activity in green gram seeds was estimated by Bernfeld method (1955), estimation of invertase activity was done by a modified method of Harris and Jaffcoat (1974) and the estimation of protease activity was measured by Ladd and Butler method (1972).

GERMINATION STUDIES

Germination Index: Germination/Emergence index (GI/EI) was calculated by following formula used by Association of Official Seed Analysis (AOSA, 1990).

$$GI = \frac{\text{Number of days after sowing} \times \text{Number of seed germinated}}{\text{Total Number of seed planted}}$$

Tolerance Index: Tolerance index was calculated by using the formula suggested by Turner and Marshal (1972).

$$\text{Tolerance Index (TI)} = \frac{\text{longest radical in treatment}}{\text{longest radical in control}} \times 100$$

Percentage of phytotoxicity: The percentage of the phytotoxicity of the seedling is due to *Tecomastans* (L.). Treatment was calculated by the formula suggested by Chiou and Muller (1972).

$$\text{Phytotoxicity (\%)} = \frac{\text{Radical length of control} - \text{R length of treated sample}}{\text{Radical length of control}} \times 100$$

Data analysis

Data on radical length obtained from the study was subjected to Analysis of Variance (ANOVA-one-way-SPSS version). Means of treatment sample were compared using least significance difference (LSD at 0.05). Gulzar *et al.* (2014).

RESULTS

The overall result from the experimental study shows that the extract of fresh leaves of invasive plant *Tecomastans* (L.) is found to having high inhibitory effect on the radical length and the biochemical constituents of early germinating seeds of green gram. Fig 11 shows the effects of *Tecomastans* (L.) aqueous leaf extract on radical growth of *Vagina radiata* (L.). The length of the radical of seed soaked in control, 10%, 20%, 40%, 80% and 100% (fig 11) was found to be increased in each day of the experiment and in each case radical length was found more in control than treatments.



Fig.3. Seed soaked in control of aqueous leaf extract at 24 hours



Fig.4. Seed soaked in 100% of aqueous leaf extract at 24 hours



Fig.5. Seed soaked in control aqueous leaf extract at 72 hours



Fig.6. Seed soaked in 100% aqueous leaf extract at 72 hours

The minimum mean radical length 0.56cm was found in 24 hours of 100% concentration and the maximum mean radical length 6.41cm was found in 72 hours in control. There were significant differences ($p < 0.05$) in the radical length during three days of germination period. The shedding of seed coat was found to be delayed with increase in concentration. The germination index was found to be increased each day.



Fig.7. Highest radical length of seed in control of aqueous leaf extract at 24 hours



Fig.9. Highest radical length of seed in control of aqueous leaf extract at 72 hours

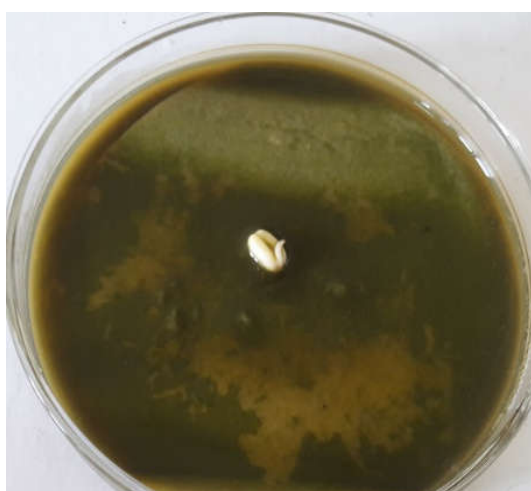


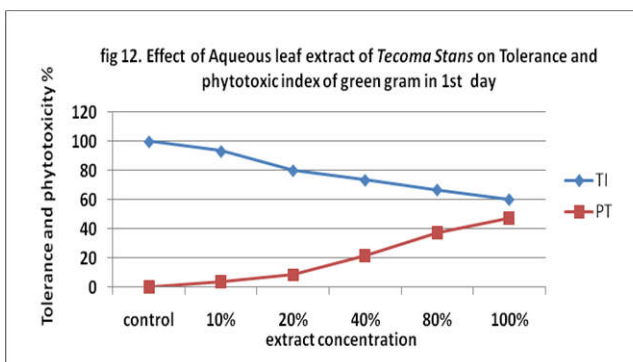
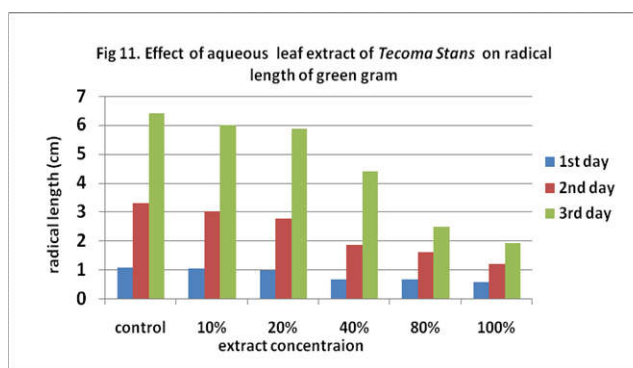
Fig.8. Highest radical length of seed in 100% of aqueous leaf extract at 24 hours



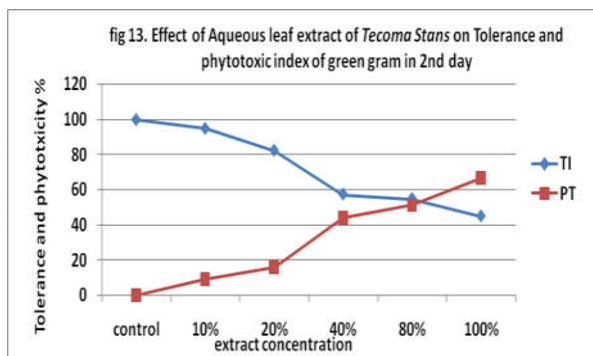
Fig.10. Highest radical length of seed in 100% of aqueous leaf extract at 72 hours

The germination index was 3 in third day in all the treatments. The effects of *Tecomastans*(L.) aqueous leaf extract on the germination index, tolerance index and phytotoxic index of *Vagina radiate* (L.) are represented in Fig (12, 13 & 14).The tolerance index was found to be decreased from control to 100% in each day of experiment, while as phytotoxic index was found to be increased from control to 100% in each day of experiment. The highest tolerance index 100 was found in control in all the three days of experiment, while as the lowest tolerance index 30.37 was found in 100% in 3rd day of experiment. Treatment of *Vaginaradiata* (L.) with the aqueous leaf extract of fresh leaves of *Tecomastans* (L.) resulted in reduction of total protein activity (Fig 15).

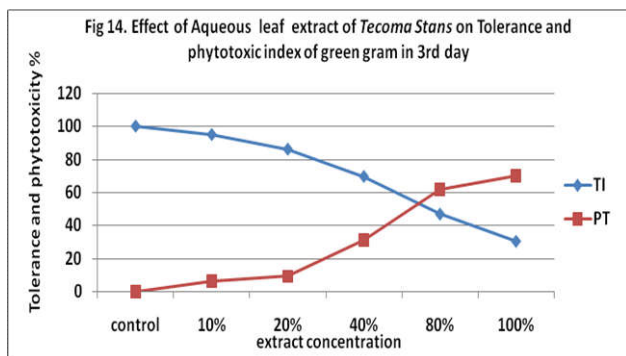
Total protein activity in control as well as in concentration of 40% and 100% decreased with time of incubation. As per ANOVA analysis, there were significant differences ($p < 0.05$) in the total protein activity. Amylase activity in control as well as in 40% and 100% concentration decreased with time of incubation and in each case of concentration amylase activity was found more in control than treatments (Fig 16). The minimum amylase activity 0.712mg starch hydrolysed/hr/g fresh weight of seed was found in 72 hours of seed germination in 100% and the maximum amylase activity 1.584mg starch hydrolysed/hr/g fresh weight of seed was found in 24 hours of seed germination in control.



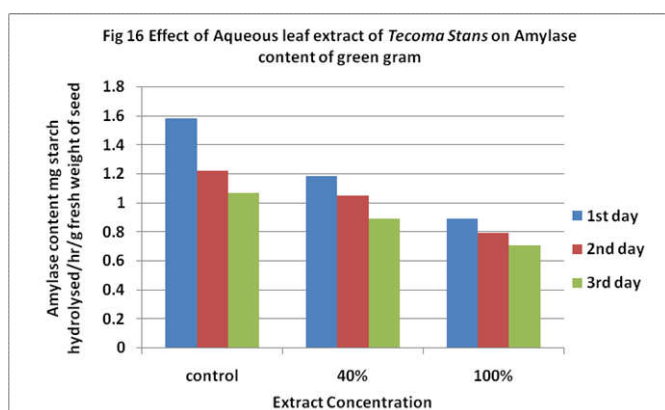
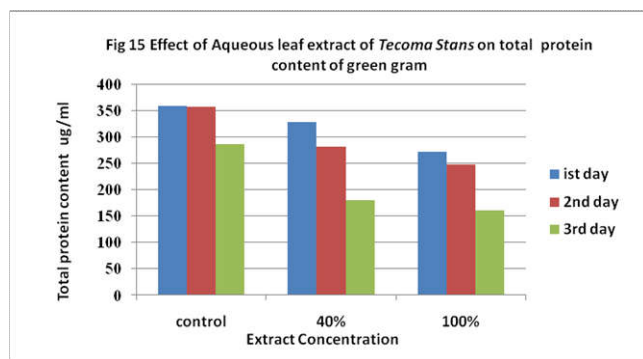
TI=Tolerance Index ; PT=Phytotoxic Index.



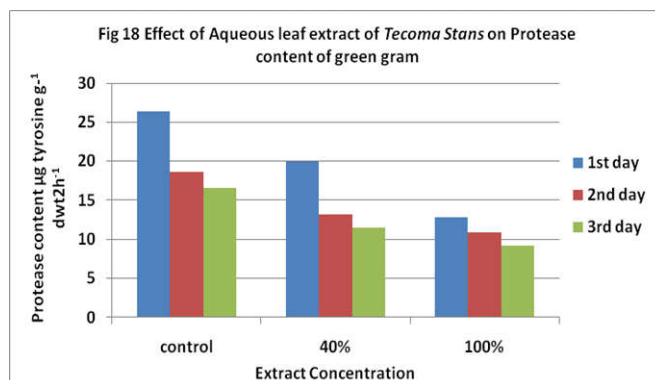
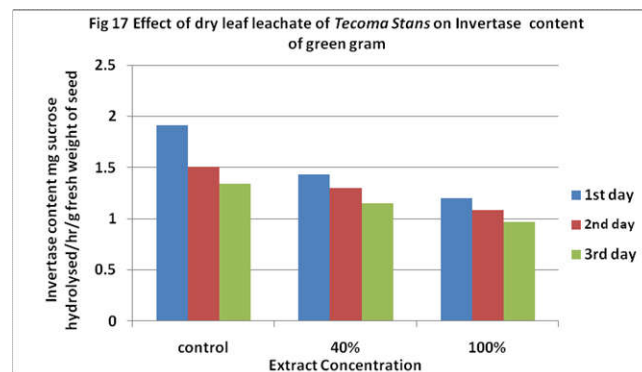
TI=Tolerance Index ; PT=Phytotoxic Index.



TI=Tolerance Index ; PT=Phytotoxic Index.



As per ANOVA analysis, there were significant differences ($p < 0.05$) in the amylase activity. Invertase activity in control as well as in concentration of 40% and 100% decreased with time of incubation and in each case of concentration invertase activity was found more in control than treatments (fig 17). There were significant differences ($p < 0.05$) in the invertase activity. Protease activity in control as well as in concentration of 40% and 100% decreased with time of incubation and in each case of concentration protease activity was found more in control than treatments (Fig 18).



As per ANOVA analysis, there were significant differences ($p < 0.05$) in the protease activity.

DISCUSSION

Allelopathy is the direct influence of a chemical released from one living plant on the development and growth of another (Bano *et al.*, 2012). Plants may favorably or adversely affect other plants through allelochemicals, which may be released directly or indirectly from live, dead plants or organic residues. The main aim of this study was to examine the allelopathic effect of aqueous leaf extract of *Tecomastans* (L.) on germinating seeds of green gram *Vignaradiata* (L.) during first three days. The results of this study indicated that the allelopathic effects of aqueous leaf extract of *Tecomastans* (L.) on green gram are inhibitory. The aqueous leaf extract of *Tecomastans* (L.) also caused a remarkable reduction in seedling growth of *Vignaradiata* (L.). The inhibition of radicle length was found to be concentration dependent.

This inhibition may be due to the inhibitors which are present in fresh leaves resulting in changing of macromolecules such as proteins, lipids as well as nucleic acids (Hussain and Reigosa 2011). Similar report on reduced radicle length has been made by Abu – Roman *et al.* (2010) on the allelopathic effect of Spurge (*Euphorbia hierosolymitana*) on wheat (*Triticum durum*). These results are also in agreement to the findings of Hussain, (1985) who reported that *Azadirachtaindica* leaf extract reduced radical growth of wheat, millet, maize, lettuce and mustard. Another possibility is that the inhibition of root length may be attributed to reduction in the synthesis of carbohydrates, protein, and nucleic acids (RNA and DNA). A third possibility is that the inhibition of root length may be due to the interference of phenols in cell division, biosynthetic processes as well as mineral uptake reported to present in the leaves of *Tecomastans*(L.). The reduction on seed germination and seedling growth might be due to imbalance of metabolism and metabolite transport, regulated by various enzyme activities from seed (Padhyet *al.*,2000).

It has been found that the influences of allelochemicals on seed germination, and the growth of root may be due to reduction in cell division (Gholami *et al.*, 2009; Singh and Chaudhary 2011). It has been also reported that seedling root (radical) growth is sensitive to allelochemicals which inhibit cell division and elongation in the root apical meristems (Zhang and Fu, 2009). Previous studies have shown that extracts from various plants tend to inhibit germination and seedling growth of a number of crop species (Sundaramoorthy and Kalra, 1991). Allelochemicals might inhibit seed germination by suppressing synthesis of gibberellins and indole acetic acid (Zhang and Fu, 2009) which are involved in growth of seeds or plants. It is understood that tolerance index and phytotoxic index were inversely related to each other. The phytotoxic index was concentration dependent that is with increase in concentration the phytotoxic index gets increased while as tolerance index gets decreased. Similar report on reduced tolerance index has been made by Prabhat *et al.* (2013) on the allelopathic effect of *Jatropha curcas* and *Pongamia pinnata* edible oil yielding crop *Glycine Max*. The same trend on increase in phytotoxicity was found by U.N. Bhale (2011) in *Sorghum vulgare* due to polluted water. Saritha and Prasad (2008) investigated that Cd-induces phytotoxicity in *Sorghum bicolor* (L.) during seed germination and seedling growth.

Treatment of green gram seedlings with aqueous leaf extract of *Tecomastans* (L.) resulted in reduction of total protein activity. It is possible that the phenolic compounds present in the aqueous leaf extract may reduce the incorporation of certain amino acids into proteins and thus reduced the rate of protein synthesis. Prasad *et al.* (1999) reported that the aerial and shoot biomass of *Rhamnusvirgatus* tree significantly decreased the protein content of *Triticumaestivum*, *Eleusinecoracana*, *Lens culinaris* and *Phaseolusmungo* as compared to control. Hamed *et al.* (2015) reported that aqueous leaf extract of *Trichodesma africanum* L reduced the soluble protein, insoluble protein and total protein contents of *Portulacaoleracea* L. Padhy *et al.* (2000) noticed that the leachates of *Eucalyptus globulus* reduce the protein content in both the root and shoot of finger millet.

Many phytotoxic allelochemicals have been isolated, identified, and found to influence a number of physiological reactions, for example, water utilization, photosystem II (PSII) efficiency, nutrient uptake, ATP synthesis, cell division, and gene expression (Blum, 1996). Cell division, production of plant hormones and their balance, membrane stability and permeability, germination of pollen, mineral uptake, movement of stomata, pigment synthesis, photosynthesis, respiration, amino acid syntheses, nitrogen fixation, specific enzyme activities and conduction tissue are known targets for allelochemicals (Rizvi *et al.*, 1992; Wink *et al.*, 1998). Enzymes are the chief molecules, which are stimulated when a seed started germinating and enzymes like amylase, catalase, invertase and protease quantity varies. In the present study, activity of enzymes was found to decrease with increase in concentration over a given period of time (3 days). The enzyme activity was concentration dependent. Treatment of green gram seedlings with fresh leaf extract of *Tecomastans* (L.) resulted in reduction of amylase activity. Ramakrishnan *et al.* (2014) reported that leachates of *Gmelina arborea* reduced the amylase content of green gram, red gram, black gram, and chickpea. Aurora *et al.* (2009) reported that the aqueous leachate of *Sicyos deppei* (Cucurbitaceae) reduced the amylase content in germinating tomato seeds.

Inhibition of seed germination of crop plants might be the interfere with activities of peroxidase, alpha-amylase and acid phosphates (Alam and Islam 2002). Treatment of green gram seedlings with fresh leaf extract of *Tecomastans* (L.) resulted in reduction of both invertase and protease activity. Devi and Prasad (1992) reported that activities of amylase, invertase and protease were suppressed by ferulic acid in tests using maze seeds and seedlings. Saritha and Prasad (2008) investigated that all hydrolyzing enzymes including amylase and total proteases exhibited a significant decrease during seed germination and seedling growth in *Sorghum bicolor* (L.) with increasing Cd concentrations. Allelopathic inhibition is complex and can involve the interaction of different classes of chemicals like phenolic compounds, flavonoids, terpenoids, alkaloids, steroids, carbohydrates, and amino acids, with mixtures of different compounds sometimes having a greater allelopathic effect than individual compounds alone (James and Bala, 2003). In the case of *Tecomastans* (L.) it is reported from the preliminary screening of this plant revealed the presence of tannins, flavonoids, alkaloids, quinones and traces of saponins and amino acids by Archana, 2013. Methanol and ethanol extracts of the leaves showed the presence of all the secondary metabolites studied- saponins, flavonoids, tannins, phenols, anthraquinones, alkaloids and glycosides which would be the active principles of the plant. Ethyl acetate extracts indicated the presence of saponins, tannins and phenols whereas aqueous extracts showed saponins, flavonoids phenols and alkaloids from leaves of *Tecomastans* (L.) (Minal *et al.*, 2014). These phyto-constituents individually or synergistically interfere with various cellular metabolic activities of germinating seeds.

Therefore, the allelopathic property of extracts of fresh leaves of *Tecomastans* (L.) might be due to phytochemical constituents and such allelopathic characteristics is also one of the important traits in invasive plants. Concludingly, it could be stated that allelopathic weed management seems immediately advantageous as an alternative or a supplement to other weed management practices in crop production. Reduced reliance on traditional herbicides via the use of allelopathy has frequently been mentioned as environmentally favorable (Macias, 1995; Narwal *et al.*, 1998). Further studies, on screening, isolation and testing of individual phytochemical constituents present in *Tecomastans* (L.) would bring out the exact bioactive compound present in the leaves of *Tecomastans* (L.) which could be potentially used in weed management.

REFERENCES

- Abu-Romman, S., Shatnawi, M. and Shibli, R.S. 2010. Allelopathic effects of Spurge (*Euphorbia hirsuta*) on Wheat (*Triticum durum*). *American-Eurasian J. Agric Environ. Sci.*, 7(3):298-302.
- Alam, S.M. and Islam, E.U. 2002. Effect of aqueous extract of leaf, stem and root of nettle leaf goosefoot and NaCl on germination and seedling growth of rice. *Pakistan Journal of Science and Technology.*, 1 (2): 47-52.
- Archana Singh, Nagori B.P and Kumkum Mathur. 2013. *Tecomastan*: An important medicinal plant. *International journal of Pharmaceutical Erudition*, 3(2): 13-21.
- Association of Official Seed Analysis (AOSA). 1990. Rules for testing seeds. *J. Seed Technol.*, 12:1-112.

- Aurora Lara-Nunezi, Teresa Romero-Romero, Jose Luis Ventura, VaniaBlancasi, Analuisa Anaya andRocio Cruz-Ortega. 2009. *Physiologia Plantarum*, 136:180–192.
- Bano S, Ullah MA, Khaliq A, Abbasi KH, Khanum S. 2012. Effect of aqueous extract of sun – dried neem (*Azadirachtaindica*) leaves on wheat and wheat weeds (wild oat and dumbisitti) in Vitro. *International Research Journal of Plant Science*, 3(4):69-73.
- Bernfeld P. 1955. Alpha and beta amylases. *Methods in enzymology*, 1:149-158.
- Bimal Debnath, Amal Debnath and ChiranjitPaul, 2016. Allelopathic effects of invasive weed *Solanumsisymbriifolium* lamk on germination and seedling growth of four widely cultivated Indian crops. *I.J.S.N* 7.,1:194-198.
- Bradford, M. M. 1976. A rapid and sensitive method for the quantitation of microgram quantities of protein utilizing the principle of protein-dye binding. *Anal Biochem*, 72:248-254.
- ChiouCH and Muller CH.1972. Allelopathic mechanism of *Archtostrongylousglandulosa* variety Zazaesis. *Americanmediterranean nature*, 88:324-47.
- Devi S R and Prasad MN .1992. Effect of ferulic acid on growth and hydrolytic enzyme activities of germinating maize seeds. *JChem Ecol*, 18(11):1981-90.
- FaraWahida Ahmad Hamidi, FahmiHaqqiInzzudinZainuddin, Ahmad MunawarIsmail and Muhamad Yusuf Hasan 2014. Preliminary Study on allelopathic effect from *Chromolaena Odorata* (Siam Weed) leaves extract towards *Vigna Radiata*. *International Journal of Engineering Research & Technology*, 3(8):406-411.
- Gantayet P.K, S.P.Adhikary, K.C. Lenka and B.Padhy. 2014. Allelopathic impact of *Lantana Camara* on vegetative growth and yield components of green gram (*Phaseolus radiates*). *Int. J. Curr. Microbiol. App. Sci*, 3(7):327-335.
- Gholami A, Shahsavani. S and Nezarat S. 2009. The effect of plant growth promoting rhizobacteria (PGPR) on germination, seedling growth and yield of maize. *World Acad. Sci. Engg. & Technol*, 49:19-24.
- GulzarandM.B. Siddiqui.2014. Evaluation of allelopathic effect of *Ecliptaalba* (L.) Hassk on biochemical activity of *Amaranthusspinosus* (L.), *Cassia tora*(L.) and *Cassia sophera* (L.). *Afr. J. Environ. Sci. Technol*, 8.,1–5.
- Hamed M. E-Shora, Abdel-Aal and Faaz F. Ibrahim. 2015. Allelopathic potential of *Trichodesmaafricanum* (L.). Effects on germination, growth, chemical constituents and enzymes of *Portulacaoleracea* (L.). *Int.J.Curr.Microbiol. App.Sci*, 4(9):941-951.
- Harris, G.P. and Jaffcoat, B. 1974. Effects of temperature on the distribution C14labelled assimilates in the flowering shoot of carnation. *Ann. Bot.*, 38:77-83.
- Hemanth Kumar N. K, ShobhaJagannath and P. Basalingamma. 2015. Allelopathic efficacy of aqueous extracts of *Zingiberofficinale* (Ros.) on germination, vigour, growth and yield of *Vignaradiata* (L.). *Journal of Applied Biology and Biotechnology*, 3(05): 048-051.
- Hussain, F., I. Haq and G. Anjum1985. Phytotoxic effect of *Azadirachtaindica* on cultivated plants and their productivity. *Pak. J. Agric. Res*, 6(2):125-130.
- Hussain I. M and M. J. Reigosa. 2011. Allelochemical stress inhibits growth, leaf water relations, PSII photochemistry, non-photochemical fluorescence quenching, and heat energy dissipation in three C3 perennial species. *Journal of Experimental Botany*, 62(13):4533-4545.
- James J F and Bala R. 2003. Allelopathy: How Plants Suppress Other Plants., IFAS, University of Florida, U.S.A.
- Kavitha, J. Prabhakaran and K. Arumugam. 2012. Allelopathic influence of *Vitexnegundo*(L.) on germination and growth of green gram (*Vignaradiata* (L.) R. Wilczek) and black gram (*Vignamungo* (L.) Hepper). *International Journal of Ayurvedic and Herbal Medicine*, 2(1):163:170.
- Kuipers AT and Denneman CAJ.1987. Water-soluble substances in soils under several coniferous and deciduous tree species. *Soil Biology and Biochemistry*, 19:765-769.
- Ladd J.N. andButler.1972.J.H.A. Short-term assays of soil proteolytic enzyme activities using proteins and dipeptide derivatives as substrates. *Soil Biol. Biochem*, 4:19-30.
- Leelaand P. Arumugam.2014. Allelopathic influence of teak *Tectonagrandis* (L.) leaves on growth responses of green gram (*Vignaradiata* (L.) Wilczek) and Chilli (*Capsicum Frutescens* (L.)). *International Journal of Current Biotechnology*, 2(4):55-58.
- Madhan Shankar S.R, R. Girish, N. Karthik, R. Rajendran and V.S. Mahendran. 2009. Allelopathic effects of phenolics and terpenoids extracted from *Gmelinaarborea* on germination of black gram (*Vignamungo*) and green gram (*Vignaradiata*). *Allelopathy Journal*, 23(2):323-332.
- Macias, F. A. 1995. Allelopathy in the search for natural herbicidesmodels. In Allelopathy. Organisms, Processes and Applications (ed. K. M. M. Inderjit and E. F.A.), *American Chemical Society*, 23:310-329.
- MaharjanS, Shrestha BB and Jha P K. 2007. Allelopathic effects of aqueous extract of leaves germination and seedling growth of some of *Partheniumhysterophorus* (L.) on seed cultivated and wild herbaceous species. *Scientific World*, 5(5):33-39
- Manimegalai, Manikandan, Sheela and Geetha.2012. Allelopathic influence of *Tectonagrandis* leaves on the germination of black gram and green gram. *Int J Curr Sci*, 241-244.
- MinalWani and Namde H. 2014. Callus induction studies and active components and antioxidant activity investigation from leaves and callus of *Tecomastans* (L.) Juss.Ex Kunth. *RJPBCS*, 5(2):604-610.
- Musyimi D. M, S. W. Kahihu, D. K. Buyela and P. A. Sikuku, 2012. Allelopathic effects of Mexican sunflower [*Tithoniadiversifolia* (Hemsl) A. Gray] on germination and growth of Spiderplant *Cleome gynandra*(L.). *Journal of Biodiversity and Environmental Sciences*, 2(8):26-35.
- Naomi Cappuccino and David Carpenter.2005. Invasive exotic plants suffer less herbivory than non-invasive exotic plants. *Biol. Lett*, 1(4):435–438.
- Nelson CJ.1996. Allelopathyin cropping system. *Agron. J*, 88:991-996.
- Padhy B, PatinaikPK and Tripathy AK .2000. Allelopathic potential of Eucalyptus leaf litter leachates on germination and seedling growth of finger millet. *Allelopathy J*, 7:69-78.
- Prasad, P.V.V, P.Q. Craufurd and R.J. Summerfield, 1999. Sensitivity of peanut to timing of heat stress during reproductive development. *Crop Sci*, 39:1352–1357.
- Prabhat Singh, Anuj Kumar Ahalavat and Vimala Y. 2013. *Jatropha Curca*, *PongamiaPinnata* plantation with *Glycine max* as safe and potent green energy source. *Annals of Plant Sciences*, 02(12):520-523.
- RamakrishnanMadhan Shankar, ShanmughamVeeralakshmi, Abdul RazackSirajunnisa and RamasamyRajendran, 2014. Effect of allelochemicals from leaf leachates of *Gmelinaarborea* on inhibition of some essential seed

- germination enzymes in green gram, red gram, black gram, and chickpea. *International Scholarly Research Notices*, 108682:1-7.
- Rice EL.1984. Allelopathy. Second Edition, Oriando, Florida, USA, Academic Press., 422.
- Rizvi, S. J. H., Haque, H, Singh, V. K. and Rizvi, V.1992. A discipline called allelopathy. In Allelopathy. Basic and applied aspects (ed. S. J. H.Rizvi and V. Rizvi). Chapman and Hall, London., 1-8.
- Saritha V.Kuriakose and M. N. V. Prasad, 2008. Cadmium stress affects seed germination and seedling growth in *Sorghum bicolor (L.)* Moench by changing the activities of hydrolyzing enzymes. *Plant Growth Regul.*, 54:143–156.
- Singh, A.P and Chaudhary, B.R.2011. Allelopathic of algae weed *Pithophoraaedogonia (Mont.)* ittrock on the germination and seedling growth of *Oryza sativa (L.)*. *Botany Research International.*, 4(2):36-40
- Singh and Chaudhary.2011. Antibacterial activity of actinomycetes isolated from different soil samples of Sheopur (A city of central India). *Journal of Advanced Pharmaceutical Technology and Research.*, 4(2):118–123.
- Sundaramoorthy S and Kalra A. 1991. Allelopathy and vegetation in *Acaciatortilis* plantations in Indian desert. *Annals of arid zone.*, 30.,259-266.
- Turner, R. C. and Marshal, C. 1972. Accumulation of zink by subcellular fraction of some root *Agroticsteneys* in relation to zink tolerance. *New Phytol.*, 71:671-676.
- Bhale. U.N. 2011. Tolerance of polluted water on seedling growth of some cereal crops. *Int. J Latest Trends Bot. Sci.*, 1:5-7.
- Wink, M., Schmeller, T. and Latz-Bruning, B. 1998. Modes of action of allelochemical alkaloids: Interaction with neuroreceptors, DNA and other molecular targets. *Journal of chemical ecology.*, 24:1881-1937.
- Zhang C and Fu S. 2009. Allelopathic effects of eucalyptus and the establishment of mixed stands of eucalyptus and native species. *Forest Ecol Manag.*, 258:1391–1396.
