



ISSN: 0975-833X

Available online at <http://www.journalcra.com>

INTERNATIONAL JOURNAL
OF CURRENT RESEARCH

International Journal of Current Research
Vol. 13, Issue, 10, pp.19286-19291, October, 2021

DOI: <https://doi.org/10.24941/ijcr.42594.10.2021>

RESEARCH ARTICLE

A COMPARATIVE STUDY OF ESTIMATION OF URINARY PROTEIN BY TURBIDIMETRIC METHODS VS PYROGALLOL RED MOLYBDATE METHOD

Harmanjot Kaur¹, Dr. Gitanjali Goyal^{1*} and Jagroop Singh²

¹Department of Biochemistry, GGS Medical College Faridkot, Punjab

²Research Associate, Viral Research Diagnostic Laboratory, Government Medical College Amritsar, Punjab

ARTICLE INFO

Article History:

Received 17th July, 2021
Received in revised form
20th August, 2021
Accepted 14th September, 2021
Published online 30th October, 2021

Key Words:

Urinary protein, Turbidimetric and Pyrogallol Red Molybdate Method.

*Corresponding author:

Dr. Gitanjali Goyal

ABSTRACT

Background: The Concentration of total proteins in urine is a good index of renal function, but its determination is found to be unreliable. The pyrogallol red molybdate (PRM) method for urine total proteins is being widely used in most of hospitals because of its high sensitivity, better precision and its practicability. **Material and Methods:** The cross sectional study was conducted in department of biochemistry in the collaboration with department medicine in Guru Gobind Singh Medical College and Hospital, Faridkot. Out of 60 patients, 31 were males and 29 were females. **Result:** A statistically significant correlation was found between Pyrogallol red molybdate with Turbidimetric methods was highly significant with p value of ≤ 0.0001 and r value of 0.68, 0.86, 0.97 respectively. **Conclusion:** From this study, it was concluded that turbidimetric methods are correlated with pyrogallol red molybdate but there is significant difference in mean. So, pyrogallol red molybdate is method of choice for detecting proteinuria

Copyright © 2021. Harmanjot Kaur et al. This is an open access article distributed under the Creative Commons Attribution License, which permits unrestricted use, distribution, and reproduction in any medium, provided the original work is properly cited.

Citation: Harmanjot Kaur, Dr. Gitanjali Goyal and Jagroop Singh. "A comparative study of estimation of urinary protein by turbidimetric methods vs pyrogallol red molybdate method", 2021. International Journal of Current Research, 13, (10), 19286-19291.

INTRODUCTION

Proteins are large size molecules (macromolecules), polymers of structural units called amino acids. Depending on the amino acid sequence (different amino acids have different biochemical properties) and interactions with their environment, proteins fold into a three-dimensional structure, which allows them to interact with other proteins and molecules and perform their function. The chemical properties of the amino acid determine the biological activity of the protein(1). Proteinuria is a condition in which urine contains an excess amount of proteins. Normal adults excrete less than 150 to 200 mg/day of protein in the urine(2). Very little of this protein is albumin (less than 10—20 mg/day). Albumin excretion in the range of 30 to 300mg/day or 30 to 300mg/g of urinary creatinine, is referred to as microalbuminuria. At these levels, standard dipsticks do not detect albumin in the urine, and specific measurement of albumin using highly albumin-sensitive techniques is required. The terms "proteinuria" and "albuminuria" are often used synonymously in the medical literature.

This is generally acceptable, since in general the most abundant urinary protein in patients with renal disease is albumin

Pathophysiologic mechanisms that underlie increased urinary protein excretion

Overflow" proteinuria: High blood levels of positively charged small molecular weight light chains escape glomerular charge and size barriers and overwhelm tubular capacity to reabsorb and catabolize them (3).

Glomerular proteinuria: Selective- loss of only the glomerular charge-barrier, albumin excreted predominantly. Non-selective- loss of both the charge and size-barrier with excretion of albumin and larger molecular weight proteins (such as IgG) (4).

Tubular proteinuria: Albumin and larger proteins restricted by intact glomerular barriers. Small molecular weight proteins normally freely filtered at the glomerulus (such as j3-2

microglobulin) escape reabsorption/catabolism because of renal tubular damage (5).

Postural proteinuria: Abnormal protein excretion in the upright posture, with normal urinary protein excretion in recumbency, probably due to exaggerated systemic and glomerular hemodynamic responses in the upright posture(6).

Classification of proteinuria based on quantity of protein excreted

Normoalbuminuria/normal urinary protein- Less than 200 mg/dl of total protein with less than 10-20 mg of albumin/day (random urine protein/urine creatinine ratio <0.2).

Microalbuminuria: Albumin excretion of 30-300 mg/day or 30-300 mg/g of urinary creatinine or >20 mcg/minute. Microalbuminuria is caused by glomerular capillary injury and so may serve as a marker for diffuse endothelial dysfunction(7). The appearance of microalbuminuria (incipient nephropathy) in type I diabetes mellitus is an important predictor of progression to overt proteinuria (> 300 mg /dl) or overt nephropathy(8). The prevalence of microalbuminuria increases to 50-60 % after 20-30 years duration of diabetes(9).

Overt proteinuria—subnephrotic range: Albumin excretion of >300 mg/day or >300 mg/g of urinary creatinine or >200 mcg/minute. Total daily protein excretion >300 mg and <3.5 g (random urine protein/urine creatinine ratio >0.2-<3.5). Dipstick positive for proteinuria.

Nephrotic range proteinuria: Excretion of >3.5 g/day of protein (random urine protein/urine creatinine Persistent proteinuria of more than 1.0 gm/day in any adult is not only suggestive of the existence of renal disease but also an increased risk of myocardial infarction and stroke(10). Current methods for measuring proteinuria vary significantly. Commonly used methods are dipstick urine analysis, 24 hours urine protein estimation and spot urine protein creatinine ratio. The most common method used for the quantification of proteinuria is estimation of 24 hours urinary protein in a urine specimen collected over 24 hours. However, 24 hours urinary protein estimation method has certain pitfalls and thus leads to discarding of nearly 1/3rd of the samples. To obviate these difficulties short timed urine collection has been advocated with the hypothesis that protein excretion is nearly constant throughout the day.

Methods of detecting and measuring proteinuria

DETECTION OF PROTEINURIA

- Dipstick analysis
- Precipitation methods

QUANTIFICATION OF PROTEINURIA

- Biuret method - Copper reagent - Tsuchiya reagent - Fowlin-Lowry
- Turbidimetric method - Sulfosalicylic acid - Benzethonium chloride - Trichloroacetic acid - Sulfosalicylic acid with sodium sulphate
- Dye binding technique - Pyrogallol red - Coomassie brilliant blue - Ponceau S
- Radio immuno assay(RIA)

- Enzyme linked immunosorbent assay (ELISA)
- Protein Creatinine ratio

CHARACTERIZATION OF PROTEINURIA

- Immuno electrophoresis
- Column gel chromatography
- Agarose gel electrophoresis
- Polyacrylamide gel electrophoresis
- Isoelectric Focussing

DETECTION OF PROTEINURIA

Dipstick Method: It is used in most out-patient settings to detect proteinuria. It is a semi quantitative method of measuring the urine protein concentration. Paper strip is impregnated with indicator dye like bromocresol green which changes colour in presence of protein. With increasing concentrations of protein in urine the dye indicators undergo sequential colour changes from pale green to green and blue. In the absence of protein the dipstick panel is yellow. The results are expressed on a scale from 0 to +++ or +++++, each of which correspond to increasing approximate protein concentrations. They preferentially detect negatively charged urinary proteins- Albumin. However albumin levels between 30-300mg/dl are not detected(11). Light chains and some low molecular weight protein are also not detected by stick tests.

Precipitation Method

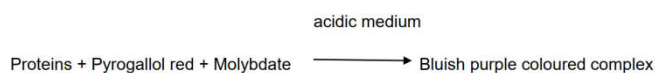
Kjeldahl Method: This precipitation method measures protein by measurement of precipitated Nitrogen. Detection limit is 10-20ng/l.

QUANTIFICATION OF PROTEINURIA

Biuret Method: This method is based on the interaction between copper ions and the carbamide group of proteins. This requires precipitation of protein, by using copper or Tsuchiya reagents. The protein in the urine must be concentrated before the biuret reaction and Tsuchiya reagent (ethanolic hydrochloride phosphotungstic acid) is the best precipitating compound. Its detection limit is 50mg/l(12). A modification of the biuret method, which is now the reference method recommended by the American Association for Clinical Chemistry, utilizes gel filtration to exclude small interfering compounds (13).

Turbidimetric Method: The addition of Trichloroacetic acid (TCA) or Sulfosalicylic acid (SSA) alters colloid properties of protein and produces turbidity to be read in a densitometer. Benzethonium can also be used instead of sulfosalicylic acid. Its detection limit is 50-100 mg/l. The advantage of this easily performed test is its greater sensitivity for Bence Jones proteins (BJP). Lack of precision and variance in the reading for albumin and globulin limit the use of this method. Few milliliters of freshly voided, centrifuged urine is added to an equal amount of 3 % SSA. Turbidity will result from protein concentration as low as 4mg/dl to be read in densitometer. False positive results can occur when a patient is taking sulfonamides or penicillin and within 3 days of administration of radiographic dyes (14). A false negative result occurs with highly buffered alkaline urine or dilute specimen of urine.

Dye binding technique: This is most widely used technique for quantification of urinary proteins(15). These are based on the interaction between proteins and a dye, which causes a shift in the absorption maxima (measured photometrically) of the dye. They are reliable, accurate and easy way for assessing proteinuria. Commonly used dyes are pyrogallol red, Coomassie brilliant blue and Ponceau S. Pyrogallol red dye is the most commonly used dye for dye binding technique. Pyrogallol red combines with sodium molybdate to form a red complex. Proteins, in an acidic medium combine with this red complex and form a bluish purple colored complex. The intensity of the color formed is directly proportional to amount of proteins present.



MATERIALS AND METHODS

The Study was conducted in Department of Biochemistry in the collaboration with Department of Medicine of Guru Gobind Singh Medical College and hospital, Faridkot. Ethical clearance was taken from institutional ethical committee. Proper informed consent was taken from all the participants. Out of 60 patients, 31 were males and 29 were females. They was subjected to detailed history and examination, biochemical and special testing according to the pretested performa.

Sample Collection and Processing: The urine was collected in the morning because the first morning urination is more concentrated and yield the best results. Collected urine was stored in a clean, dry container and labeled properly.

Transport and Storage: The container used during transportation were tightly closed to prevent leakage of the contents During transportation integrity of the specimen identification and condition from the time of specimen submission to analysis was ensured in laboratory. For example, if the specimen were refrigerated, the laboratory ensured that the refrigerator is properly maintained and that delays in specimen delivery do not compromise specimen integrity.

Preservatives: For specimens not analyzed within two hours of collection, then preservation of the urine specimen using a specifically designed chemical preservative or media transport device was done.

Turbidimetric methods: The total proteins present in urine were measured by precipitating.

Precipitation of proteins: Protein precipitation can be caused by the differential solubility between a protein-rich soluble phase and a solid chemical precipitant. Soluble proteins can be insolubilized by interaction with a suitable precipitant that decreases the protein's attraction to the solvent and increases the proteins attraction to other protein molecules, resulting in protein accumulation and eventually precipitation(16).

Turbidity: Turbidity of a heated globular protein sample depends on the aggregation of heat-denatured protein molecules. By control of the heating conditions, particularly pH and ionic strength, soluble linear aggregates of denatured molecules can be formed (17).

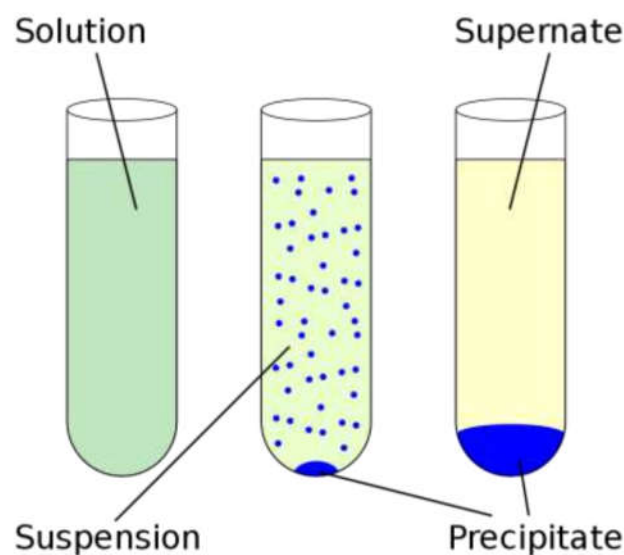


Figure 1. Showing Precipitation of Proteins

- Sulfosalicylic acid (SSA)
- Sulfosalicylic acid with sodium sulphate(SSSS)
- Trichloroacetic acid(TCA)
- Pyrogallol red molybdate(PRM)

Sulfosalicylic acid method

Principle: Based on the precipitation of urine protein by strong acid, i.e. sulfosalicylic acid (18).

Trichloroacetic acid method

Principle: Trichloroacetic acid is a method available for concentrating diluted protein solution and simultaneously removing the interfering substances .TCA is based on precipitation of proteins by acids. Denaturation of proteins is there. The turbid solution formed is measured spectrophotometrically at 660nm(19).

Sulfosalicylic acid with sodium sulphate method

It is not influenced by albumin-globulin ratio to be better than SSA and TCA methods. The SSA method is affected by the albumin-globulin ratio. In a series of solutions having an equal concentration of total proteins but with increasing concentration of albumin there is an increase in protein concentration by SSA method, where as a minor change observed with SSSS and TCA methods. SSSS method had a good precision in comparison with SSA, TCA and PRM.

Pyrogallol red molybdate method

Principle: Proteins react in acid solution with pyrogallol red and molybdate to form a colored complex the intensity of color formed is proportional to the protein concentration in the sample(20).

RESULTS AND OBSERVATION

The study was carried out in the Department of Biochemistry in Guru Gobind Singh Medical College & Hospital, Faridkot with an objective to compare the urinary protein estimated by turbidimetric methods and pyrogallol red molybdate method.

showed about the male to female ratio 1:0.9. Out of the total study population 31 were males and 29 were females.

Table 1. Showing age and sex distribution of patients

AGE	MALE	FEMALE	TOTAL(N)	PERCENTAGE
18-29	11	07	18	30.0
30-41	08	06	14	23.0
42-53	07	13	20	33.0
54-65	05	03	08	13.0
TOTAL	31	29	60	100.0

Table 1 showing the age distribution of patients with Mean±SD age of 44.46±14.04 years and range 18-65 years. Maximum numbers (33%) of patients were from the age group of 42-53 years followed by (30%) in the age group of 18-29 years.

Table 2. Mean± SD value of various routine biochemical parameters in patients

Biochemical Parameters	Mean±SD	Range	Acceptable Normal Range
Blood Glucose(mg/dl)	233.1±88.9	108-566	70-110
Blood Urea(mg/dl)	53.2±40.9	12-265	15-45
Serum Creatinine(mg/dl)	1.6±1.5	0.30-6.80	0.8-1.3
Sodium(meq/l)	136.6±4.3	125-149	135-145
Potassium(meq/l)	4.1±0.7	3-6.2	3.5-5.5
Chloride(meq/l)	99.0±4.4	85-109	98-107

Table 2 shows the mean values and range of various biochemical parameters. The Mean±SD of Blood glucose was 233.1±88.9mg/dl with range of 108-566mg/dl, Blood Urea was 53.2±40.9mg/dl with the range of 12-265mg/dl and the Mean±SD of Serum Creatinine was 1.6±1.5mg/dl with the range of 0.30-6.80mg/dl, Mean±SD of Sodium was 136.6±4.3meq/l with the range of 125-149meq/l, Mean±SD of Serum Potassium was 4.1±0.7meq/l with the range of 3-6.2meq/l, Mean±SD of Serum Chloride was 99.0±4.4meq/l with the range of 85-109meq/l.

Table 3. Mean± SD of urinary proteins by turbidimetric methods and pyrogallol red molybdate

Biochemical parameters	Mean±SD	Range
Sulfosalicylic acid(mg/dl)	46±41.2	1.30-171
Sulfosalicylic acid with sodium sulphate(mg/dl)	65.7±50.4	3.70-185
Trichloroacetic acid(mg/dl)	101±76.5	10-210
Pyrogallol red molybdate(mg/dl)	144.3±102.4	15-250

Table 3 shows the mean values and range of biochemical parameters. The Mean±SD value of sulfosalicylic acid was 46±41.2mg/dl with the range of 1.30-171mg/dl, Sulfosalicylic acid with sodium sulphate was 65.7±50.4mg/dl with the range of 3.70-185mg/dl, Trichloroacetic acid was 101±76.5mg/dl with the range of 10-210mg/dl and Pyrogallol red molybdate was 144.3±102.4mg/dl with the range of 15-250mg/dl.

Table 4. Mean difference between sulfosalicylic acid (ssa) with sulfosalicylic acid with sodium sulphate(sss), trichloroacetic acid (tca), PYROGALLOL RED MOLYBDATE(PRM)

sulfosalicylic acid	Methods	t value	Mean difference	95% confidence interval	p value	Sig.
	Sulfosalicylic acid with sodium sulphate	2.308	19.40	2.75-36.0	≤0.05	S
	Trichloroacetic acid	4.867	54.64	32.4-76.8	≤0.0001	HS
	Pyrogallol red molybdate	6.875	97.99	69.7-126.2	≤0.0001	

Table 4 shows the mean difference between sulfosalicylic acid with all the other methods. The mean difference was significant with SSSS(P ≤0.05), while it was highly significant with both other methods i.e. TCA and PRM (P≤0.0001).

Table 5. Mean difference of turbidimetric methods and pyrogallol red molybdate

	Methods	t value	Mean difference	95% confidence interval	P value	Sig.
sulfosalicylic acid with sodium sulphate	Sulfosalicylic acid	-2.30	-19.40	-36.0(-2.7)	≤0.05	S
	Trichloroacetic acid	2.97	35.23	11.7-58.6	≤0.005	HS
	Pyrogallol red molybdate	5.33	78.58	49.3-107.7	≤0.0001	

Table 5 shows the mean difference between sulfosalicylic acid with sodium sulphate with SSA, TCA, PRM. The mean difference was significant with SSA(P≤0.05), while it was highly significant with both other methods i.e. TCA and PRM (P≤0.005),(P≤0.0001) respectively.

Table 6. Mean differences between TCA with SSA, SSSS and PRM

Trichloroacetic acid	Methods	t value	Mean difference	95% confidence interval	P value	Sig.
	Sulfosalicylic acid	-4.86	-54.64	-76.8(-32.4)	≤0.0001	HS
	Sulfosalicylic acid with sodium sulphate	-2.97	-35.23	-58.6(-11.79)	≤0.005	
	Pyrogallol red molybdate	2.62	43.35	10.6-76.0	≤0.01	S

Table 6 shows the mean Difference between Trichloroacetic acid with sulfosalicylic acid, sulfosalicylic acid with sodium sulphate, pyrogallol red molybdate. The mean difference was highly significant with both SSA, SSSS (P≤0.0001),(P≤0.005) respectively. while it was significant with PRM(P≤0.01).

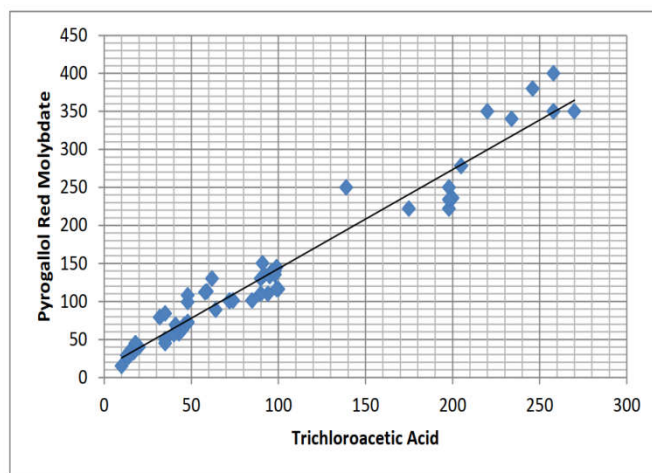


Figure 2. Showing Graph representing correlation of urinary proteins between Pyrogallol Red molybdate and Trichloroacetic acid

A statistically significant correlation was found between Pyrogallol red molybdate with Turbidimetric methods was highly significant with p value of ≤0.0001 and r value of 0.68,0.86,0.97 respectively.

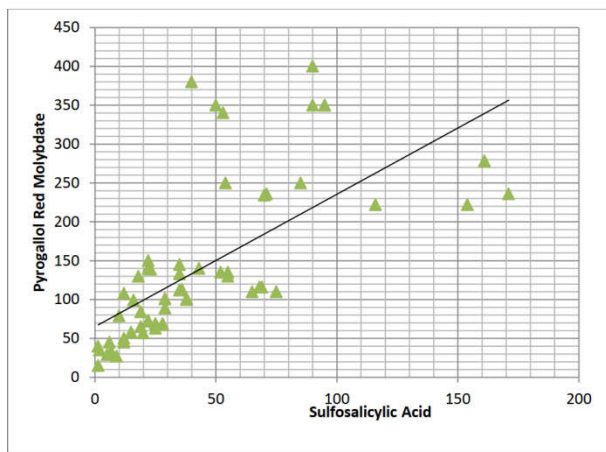


Figure 3. Showing Graph representing Correlation of Urinary Proteins done by Pyrogallol Red Molybdate and Sulfosalicylic acid

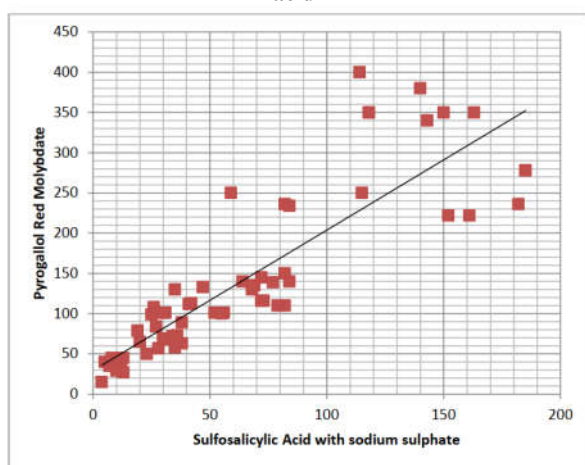


Figure 4. Showing Graph representing Correlation of Urinary Proteins done by Pyrogallol Red Molybdate and Sulfosalicylic acid with sulphate

DISCUSSION

Proteinuria is marker of early renal disease. Nephrotic syndrome along with edema, hyperlipidemia, hyperalbuminemia and more susceptibility/ prone to infection is very common these days. For the past 20 years, there has been an increased proteinuria in world wide population leading to end stage renal disease. There has been an increase risk of atherosclerotic cardiovascular disease in the patients with Proteinuria as well as microalbuminuria. Proteinuria is defined as urinary protein excretion of greater than 150mg/day Normally urine contains less than 150mg protein/day, with only 20% of it being albumin (<30 mg/d or 20 µg/min) Clinically proteinuria manifest only when the excretion is greater than several grams per 24 hours. The study was carried out in the Department of Biochemistry in Guru Gobind Singh Medical College & Hospital, Faridkot with an objective to compare the urinary protein estimated by turbidimetric methods and pyrogallol red molybdate method. The mean difference between sulfosalicylic acid with all the other methods. The mean difference was significant with SSSS($P<0.05$), while it was highly significant with both other methods i.e. TCA and PRM ($P<0.0001$). The mean difference between sulfosalicylic acid with sodium sulfate with SSA, TCA, PRM. The mean difference was significant with SSA ($P<0.05$), while it was highly significant with both other methods i.e. TCA and PRM ($P<0.005$), ($P<0.0001$)

respectively. The mean difference between Trichloroacetic acid with sulfosalicylic acid, sulfosalicylic acid with sodium sulfate, pyrogallol red molybdate. The mean difference was highly significant with both SSA, SSSS ($P<0.0001$) ($P<0.005$) respectively. while it was significant with PRM ($P<0.01$). A statistically significant correlation was found between Pyrogallol red molybdate with Turbidimetric methods was highly significant with p value of ≤ 0.0001 and r value of 0.68, 0.86, 0.97 respectively.

CONCLUSION

From this study, it was concluded that turbidimetric methods are correlated with pyrogallol red molybdate but there is significant difference in mean. So, pyrogallol red molybdate is method of choice for detecting proteinuria.

Acknowledgements

Words fall short to describe my deep sense of gratitude, respect and sincere thanks to my supervisor Dr. Gitanjali Goyal, Professor & Head, Department of Biochemistry, G.G.S Medical College & Hospital, Faridkot, for her expert guidance for my study. I would like to thank Mr. Jagroop Singh Sidhu Research Associate Govt. Medical College Amritsar Punjab (india).

Funding: No funding sources.

Conflict of interest: none declared.

Ethical approval: The approval from the ethical Committee of the Guru Gobind Singh Medical College & Hospital, Faridkot, Punjab was taken before conducting the present study.

ABBREVIATION

SSA – Sulfosalicylic acid
 SSSS – Sulfosalicylic acid with sodium sulphate
 TCA – Trichloroacetic acid
 PRM – Pyrogallol red molybdate

REFERENCES

- Denker B, Brenner B. Azotemia and Urinary abnormalities. In: Harrison's Principles of Internal medicine. 17th edition. New Delhi: Mc Graw – Hill medical publishing division, 2008.
- Devarajan P. Mechanisms of orthostatic proteinuria: lessons from a transplant donor. J Am society of Nephrol. 1993;4(1):36-9.
- Fuller CE, Threatte GA, Henry JB. Basic examination of urine. In Henry JB: Clin diagnosis and management by laboratory method. 20th ed. Co. 2001. 373-76.
- Hcbert SC, Reilly RF Jr, Kriz W. Structural-functional relationships in the kidney, in Sehrier RW. Diseases of the kidney and urinary tract. 7th ed Philadelphia: Williams and Wilkins. 2001.3-57.
- Keane WF, Eknoyan G. Proteinuria, albuminuria, risk, assessment, detection, elimination (PARADE): a position paper of the National Kidney Foundation. Am J of kidney Dis. 1999;33(5):1004-10.

6. Kerr DN. Normal values in renal medicine. *Med.* 1982;23:1047-53.
7. Kitabatake N, Doi E. Improvement of protein gel by physical and enzymatic treatment. *Food Reviews International.* 1993;9(4):445-71.
8. Lafayette RA, Perrone RD, Levey AS. Laboratory evaluation of renal function, in Sehrier RW in: *Diseases of the kidney and urinary tract.* 7th ed. Philadelphia:Williams and Wilkins. 2001.333-69.
9. Link, A. J., & LaBaer, J. Trichloroacetic Acid (TCA) Precipitation of Proteins. *cold spring harbor protocols.*2011;(8):5651
10. Mogensen CE, Christensen CK. Predicting diabetic nephropathy in insulin-dependent patients. *New Engl J of Med.* 1984;311(2):89-93.
11. O'Fagain C. Protein stability and its measurement. In: O'Fagain C (ed) *Stabilising protein Function:* Springer Press. Berlin:1997:69–75.
12. Orth SR, Ritz E. The nephrotic syndrome. *New Engl J of Med.* 1998;338(17):1202-11.
13. Pennock CA, Passant LP, Bolton FG. Estimation of cerebrospinal fluid protein. *J Clin Pathol.* 1968;21(4):518-20.
14. Ringsrud MK, Jorgenson Linne LL, Free AH. *Urinalysis and Body Fluids: A color text and atlas.* Clin Chem. 1995;41(10):1548.
15. Rytand DA, Spreiter S. Prognosis in postural (orthostatic) proteinuria: forty to fifty-year follow-up of six patients after diagnosis by Thomas Addis. *New Engl J of Med.* 1981;305(11):618-21.
16. Sarfaraz Ahmed TA. A Study on role of spot urine protein creatinine ratio in quantification of proteinuria (Doctoral dissertation, Government Mohan Kumaramangalam Medical College, Salem). 2012:1-102.
17. Stewart Cameron J. *The Patient with Proteinuria and/or haematuria.* In: *oxford Nephrology.* 3rd ed .Oxford Medical Publication, 2005.
18. Tothova C, Mihajlovicova X, Nagy O. *The use of serum proteins in the laboratory diagnosis of health disorders in ruminants. Ruminants-The husbandry, economic and health aspects.* London: Intech Open Ltd. 2018:105-46.
19. Wokes F, Still BM. The estimation of protein by the biuret and Greenberg methods. *Biochemical J.* 1942;36(10-12):797-806.
20. Wrone EM, Carnethon MR, Palaniappan L, Fortmann SP. Association of dietary protein intake and microalbuminuria in healthy adults: third national health and nutrition examination survey. *Am J kidney dis.* 2003;41(3):580-7.
