



ISSN: 0975-833X

Available online at <http://www.journalcra.com>

INTERNATIONAL JOURNAL  
OF CURRENT RESEARCH

International Journal of Current Research  
Vol. 10, Issue, 12, pp.76780-76782, December, 2018

DOI: <https://doi.org/10.24941/ijcr.33640.12.2018>

## RESEARCH ARTICLE

### THE BENEFIT OF PAP SMEAR IN DIAGNOSIS AND MANAGEMENT OF PRECANCEROUS CERVICAL LESION

\*Dr. Iqbal Abed Fahad, Muna Sami Rahman Abu- Rageef, and Kareema Ali Abbas AL- Jadiri

Wasit Health Directorate, IRAQ

#### ARTICLE INFO

##### Article History:

Received 19<sup>th</sup> September, 2018  
Received in revised form  
28<sup>th</sup> October, 2018  
Accepted 29<sup>th</sup> November, 2018  
Published online 31<sup>st</sup> December, 2018

##### Key Words:

Cervical, Cancer, Pap Smear.

#### ABSTRACT

**Background:** The standard screening test for cervical cancer is the Pap smear and cervical cancer is a significant health issue worldwide. Early sexual activity, multiple sexual partnerships, parity, young age at first pregnancy and early marriage are traditional risk factors for developing cervical cancer.

**Aim of study:** To determine the benefit of pap smear in diagnosis and management of precancerous cervical lesion. **Methods:** A cross-sectional study was carried out on 45 women who attended the private clinic in al-Kut city, Wasit for the period from January 2017 to April 2017. Data were collected through Of stored data. **Results:** Mean age of studied women was 43.5 years. Abnormal Pap results were reported in 20% of them. Pap test results associated with age group 41 - 50 years.

**Conclusion:** In our study of a range of experimental results on women of different ages who were suffering from different symptoms, we found that the majority are symptomatic and asymptomatic of benign diseases and often in their average age. Pap test is very important screening test to detect various precancerous cervical lesion. The rest of the results showed that a percentage of women in different ages are infected, Malignant diseases and varying degrees.

Copyright © 2018, Iqbal Abed Fahad et al. This is an open access article distributed under the Creative Commons Attribution License, which permits unrestricted use, distribution, and reproduction in any medium, provided the original work is properly cited.

Citation: Dr. Iqbal Abed Fahad. 2018. "The benefit of pap smear in diagnosis and management of precancerous cervical lesion", *International Journal of Current Research*, 10, (12), 76780-76782.

#### INTRODUCTION

Pap smear is the checks of the cervix for abnormal cell changes. World-wide, cervical cancer is considered the fourth most common malignancy and also the fourth most common cause of cancer death in women (Ferlay *et al.*, 2015). However, prevention and decrease mortality rate due to cervical cancer can be achieved by early diagnosis during early stages. In Iraq, there are 10.12 million women (15 years and older) at risk of developing cervical cancer (Nawal, 2009). Current reports indicated that 291 women are diagnosed with cervical cancer every year, and about 142 die from the disease (ICO, 2014). Moreover, cervical cancer ranks as the 12<sup>th</sup> most frequent cancer among women in Iraq, and the 10<sup>th</sup> most frequent cancer among women between 15 and 44 years of age (Getahun, 2013). Moreover, women's knowledge and awareness of cervical cancer are considered determinant regarding the uptake and success of cervical cancer screening (Chumnan-Kietpeerakool, 2009). The benefits of screening for cervical cancer based on Papanicolaou smear test (Pap test) are well established; routine Pap testing has led to the decline in the incidence and mortality rate of cervical cancer (Kjaer, 1998). The present study was designed to evaluate the parcons of cervical lesion.

**Aim of study:** To determine the benefit of pap smear in diagnosis and management of precancerous cervical lesion.

#### MATERIALS AND METHODS

The present cross sectional study was carried out in the women privet clinic in Al-kut city / wasit form 1st of January, 2017 to 1st of April, 2017. It includes 45 married women. Each woman who fulfils the inclusion criteria of being Post pubertal and married or previously married was included, and those with known cases of malignancy, duration of marriage less than one year, cauterization and cone biopsy, cervical scaring due to previous damage in labor, human papilloma virus infection and not received any vaginal treatment or douches 72 hours before inclusion were excluded. To make a Pap test as accurate as possible, there are several things women are recommended to avoid. For 48 hours before a Pap test, do not: Have sex, Use tampons Douche, Use vaginal lubrication Insert creams, suppositories, or medication into the vagina Use vaginal sprays or powders. The study protocol was approved by the local committee of research ethics.

#### RESULTS

In the first figure, the proportion of normal cases was 80% of the total cases. While the lowest percentage of the results, equivalent to 20%, were abnormal results.

\*Corresponding author: Dr. Iqbal Abed Fahad,  
Wasit Health Directorate, Iraq.

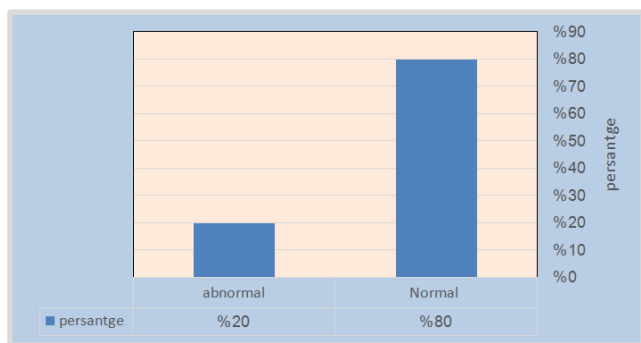


Figure 1. Percentage of normal and abnormal pap test

In Figure 2: the results of laboratory tests were classified according to age and the results of the tests. The results of the tests from age 20-30 were normal results (NILM) (9 out of 12) and the remaining 3 were ASCUS. The ages of 31-40 are all normal (NILM) and number 11. And the ages of 41-50 we found that 13 out of a total of 18 natural (NILM) and 5 residues were distributed between ASCUS and LSIL. And the reconstruction of more than 50 there were 3 out of 4 natural (NILM) and the remaining sample was ASCUS as shown in Figure 2.

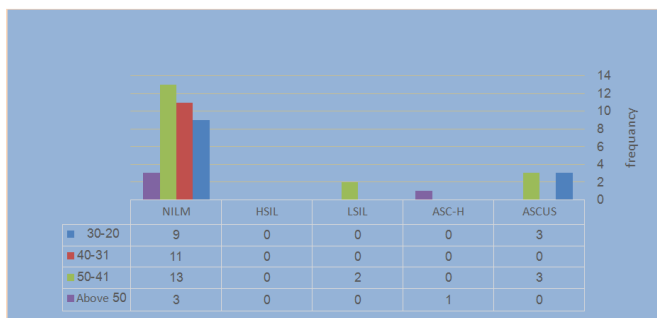


Figure 2. Interpretation of pap smear test in different age group

In Table 1, we found that most of cases are normal.

Table 1. Normal and abnormal distribution of cases according to age group

| Age   | Normal | Abnormal | Total |
|-------|--------|----------|-------|
| 20-30 | 9      | 3        | 12    |
| 31-40 | 11     | 0        | 11    |
| 41-50 | 13     | 5        | 18    |
| < 50  | 3      | 1        | 3     |
| Total | 36     | 9        | 45    |

Table 2. Cytological classifications

| Cytological classifications                | Number |
|--|--------|
| Normal                                     | 36     |
| Atypical squamous cells                    | 7      |
| Low grade squamous intraepithelial lesion  | 2      |
| High grade squamous intraepithelial lesion | 0      |
| Atypical glandular cells                   | 0      |
| Adenocarcinoma                             | 0      |
| Total                                      | 45     |

In Table 2, most of cases are normal (36) and we found (7) case have Atypical squamous cells.

DISCUSSION

The present study indicates that 80% of Pap results were normal, Pap test results were significantly associated with age group 41 - 50 years, which was consistent with that reported by

Kritpetcharat, et al. in Thailand (2012) and approximately similar to the UK records, where 20% of women with abnormal Pap results occurred in women with age less than 50 years (Kritpetcharat, 2012). Utilization of Pap test with associated diagnostic measures and treatment decreases the incidence of all histologic types and stages of invasive cervical cancer, and the benefit increases with age (Sasieni, 2009). The present study revealed that abnormal Pap test results were significantly associated with women married with age >40, which indicates that women with pre-malignant or malignant cervical lesions were younger, and start their sexual intercourse earlier with more sexual partners than healthy women. Moreover, Baram et al. (2007) reported increased abnormal Pap test results with early sexual activities in USA (Baram, 2007), and the association between cervical cancer and early marriage was clearly defined in many developing countries (Sultana, 2012). Additionally, the current study revealed no significant association between Pap test results with residence, occupation and socioeconomic history, which was inconsistent with that reported in India (Singh, 2012), this inconsistency might be attributed to difference of in sample size and the difference in socioeconomic status between countries. In addition to the importance of many other factors that determine the Pap results, including menstrual cycle irregularity, method of contraception and the surgical history, (Raj, 2010). The lack of enforcement renders legislations against child marriage ineffective, and many efforts are highly.

Conclusion

In our study of a range of experimental results on women of different ages who were suffering from different symptoms, we found that the majority are symptomatic and asymptomatic of benign diseases and often in their average age. Pap test is very important screening test to detect various precancerous cervical lesion. The rest of the results showed that a percentage of women in different ages are infected, Malignant diseases and varying degrees.

REFERENCES

Baram, D.A. and Basson, R. 2007. Sexuality, Sexual Dysfunction, and Sexual Assault. In: Berek, J.S., Ed., Berek & Novak's Gynecology, 14th Edition, Lippincott Williams & Wilkins, Philadelphia, 313-349.

Chumnan-Kietpeerakool, Y.P., Kriangsak, J., Usanee, S. and Jatupol, S. 2009. Knowledge, Awareness, and Attitudes of Female Sex Workers toward HPV Infection, Cervical Cancer, and Cervical Smears in Thailand. *International Journal of Gynecology and Obstetrics*, 107, 216-219.

Ferlay, J., Soerjomataram, I., Dikshit, R., Eser, S., Mathers, C., Rebelom, M. 2015. Cancer Incidence and Mortality Worldwide: Sources, Methods and Major Patterns in GLOBOCAN. *International Journal of Cancer*, 136, E359-E386.

Getahun, F., Mazengia, F., Abuhay, M. and Birhanu, Z. 2013. Comprehensive Knowledge about Cervical Cancer Is Low among Women in Northwest Ethiopia. *BMC Cancer*, 13, 2.

ICO Information Centre on HPV and Cancer 2014. Iraq Human Papilloma Virus and Related Cancers, Fact Sheet.

Kjaer, S.K., van den Brule, A.J.C., Svare, E.I., Engholm, G., Sherman, M.E., Poll, P.A., et al. 1998. Different Risk Factor Patterns for High-Grade and Low-Grade Intraepithelial Lesions on the Cervix among HPV-Positive and HPV-Negative Young Women. *International Journal of Cancer*, 76, 613-619.

- Kritpetcharat, O., Wutichouy, W., Sirijaichingkul, S. and Kritpetcharat, P. 2012. Comparison of Pap Smear Screening Results between Akha Hill Tribe and Urban Women in Chiang Rai Province, Thailand. *Asian Pacific Journal of Cancer Prevention*, 13, 5501-5504.
- Nawal, M.N. 2009 Child Marriage: A Silent Health and Human Rights Issue. *Reviews in Obstetrics and Gynecology*, 2, 51-56.
- Raj, A., Saggurthi, N., Winter, M., Labonte, A., Decker, M.R., Balaiah, D. and Silverman, J.G. 2010. The Effect of Maternal Child Marriage on Morbidity and Mortality of Children under 5 in India: Cross Sectional Study of a National Representative Sample. *British Medical Journal*, 340, b4258.
- Sasieni, P., Castanon, A. and Cuzick, J. 2009. Effectiveness of Cervical Screening with Age: Population Based Case-Control Study of Prospectively Recorded Data. *British Medical Journal*, 339, b2968.
- Singh, S. and Badaya, S. 2012. Factors Influencing Uptake of Cervical Cancer Screening among Women in India: A Hospital Based Pilot Study. *Journal of Community Medicine and Health Education*, 2, 1-6.
- Sultana, R. and Sultana, N. 2012. Clinical Profile and Treatment Protocol of Invasive Carcinoma of Cervix. *Bangladesh Medical Journal (Khulna)*, 45, 11-14.

\*\*\*\*\*